



eon

DODIRUJEM TE SVAKODNEVNO,
NAGRAĐUJEŠ ME SVETLOŠĆU I ENERGIJOM, ŽELIM DA TRAJE ... EON

eon

*I TOUCH YOU EVERY DAY,
REQUITE ME WITH LIGHT AND ENERGY, I WANT THIS TO LAST ... EON*



Od 1984. kvalitet i pouzdanost su glavni prioriteti u kompaniji Aling-Conel. To se podjednako odnosi na proizvode i usluge. Dugogodišnje iskustvo i brojna priznanja omogućila su nam da postanemo regionalni lider i pouzdan partner našim kupcima.

Since 1984, quality and reliability are the top priorities of the company Aling-Conel. This applies equally to products and services. Many years of experience and numerous awards have enabled us to become a regional leader and reliable partner to our customers.

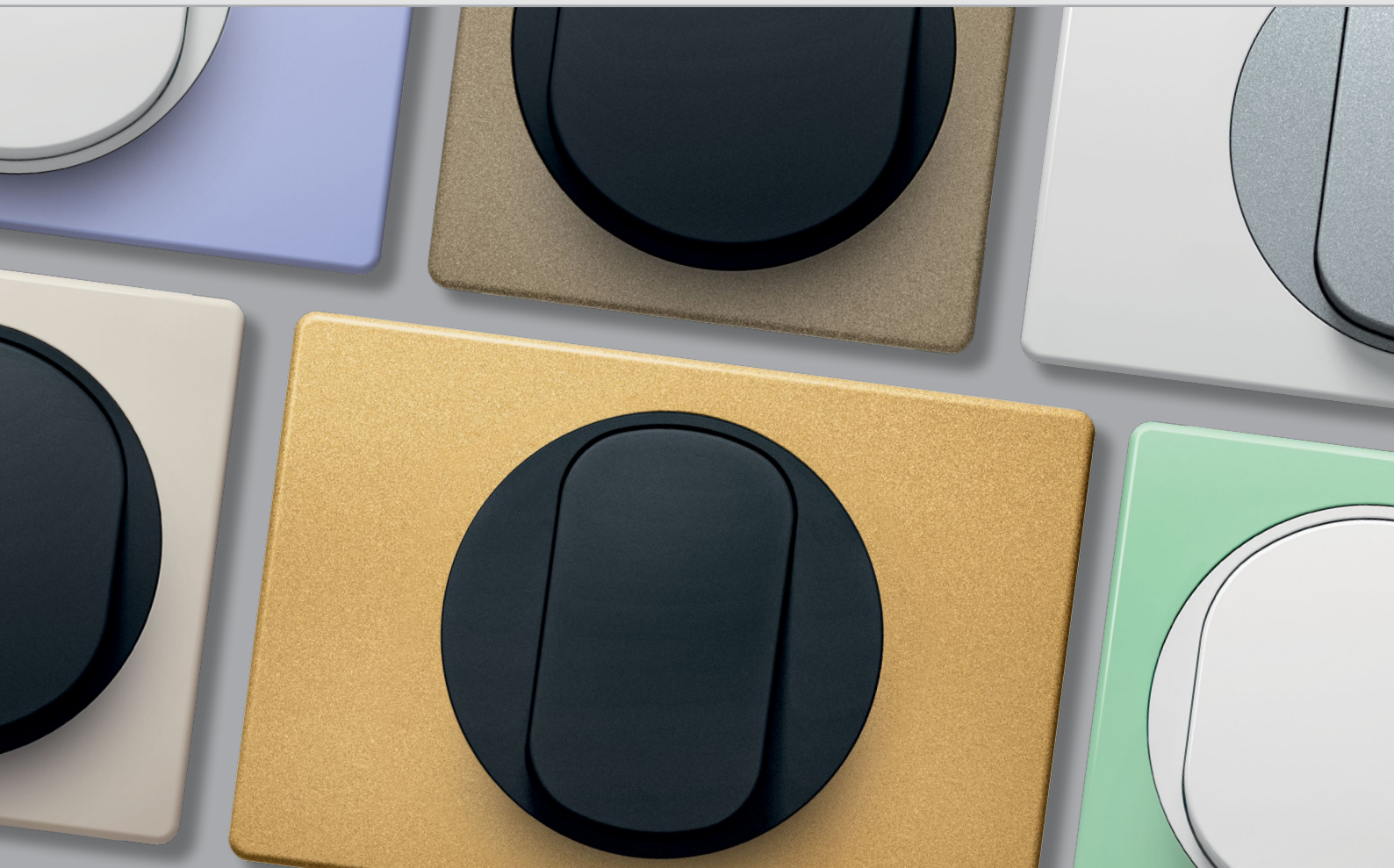


eon





ZAKORAČITE U EON SVET
ENTER THE EON WORLD



Kombinacija geometrijskih formi kruga i kvadrata kao nova estetska dimenzija.

Odabirom EON programa, oplemenićete Vaš prostor posebnim i jedinstvenim proizvodima.

The combination of geometric forms of the circle and the square as a new aesthetic dimension.

Choosing EON program, you will enrich your space with special and unique products

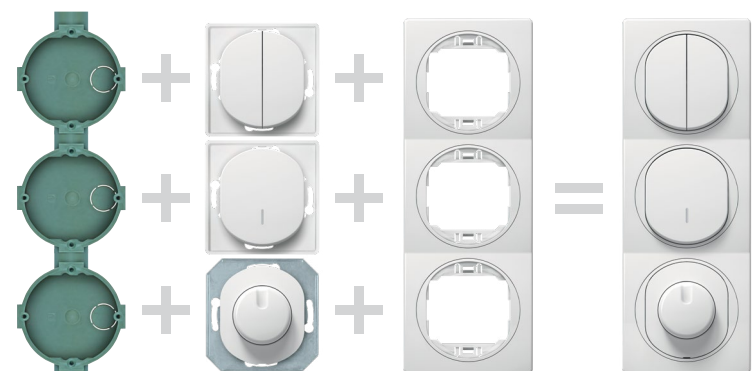
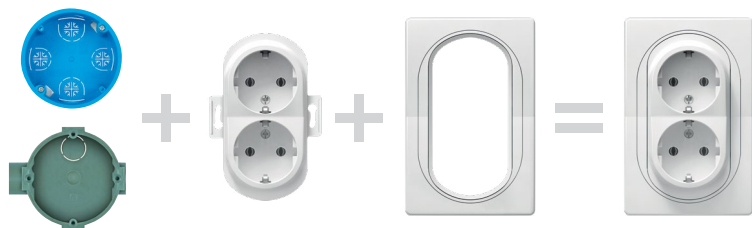
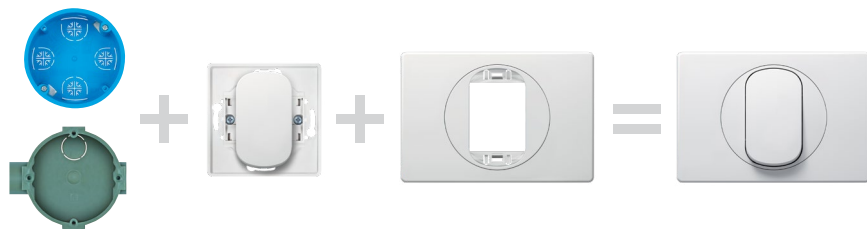
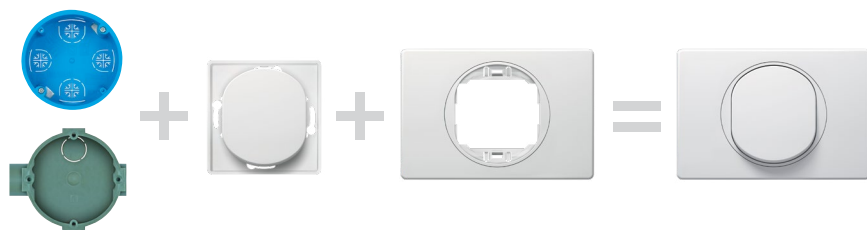
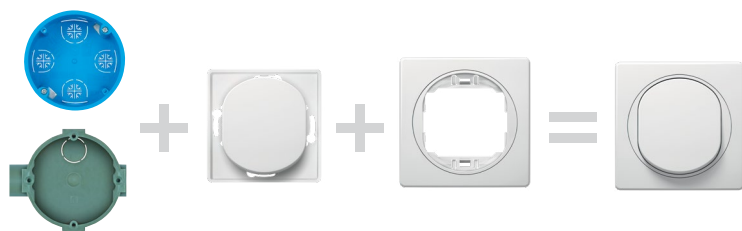


U POTPUNOJ HARMONIJI
SA MODERNIM ZAHTEVIMA DANAŠNJICE

*IN COMPLETE HARMONY
WITH THE MODERN REQUIREMENTS OF TODAY*

ŠIROKA PALETA BOJA OMOGUĆAVA VELIKI BROJ KOMBINACIJA WIDE RANGE OF COLORS PROVIDES NUMEROUS COMBINATIONS

MOGUĆNOSTI KOMBINOVANJA (NIJE PRIMENJIVO ZA
PROIZVODE SA IP44 ZAŠTITOM)
POSSIBILITY OF COMBINING (NOT APPLICABLE FOR
PRODUCTS WITH IP44 PROTECTION)



BOJA
TASTERA / BLOKA
COLOR OF
BUTTON / BLOCK



x = 0

Bela
White
RAL 9003



x = E1

Crna Soft Touch
Black Soft Touch
RAL 7035



x = S

Srebrna
Silver



CLASSIC



COLOR



METALLIC



SOFT TOUCH



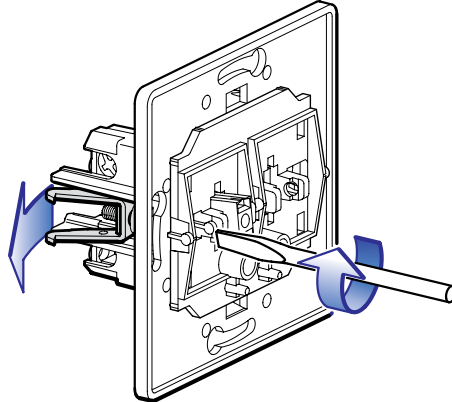
Masku sa nosačem i taster sklopke postavljamo i skidamo veoma jednostavno. Ova kombinacija će Vam pored jednostavnosti obezbediti dugotrajan i pouzdan rad.

Installation of decorative cover frame with holder and switch button is very simple and easy. Beside simplicity, this combination is providing a long and reliable usage.

TEHNIČKE PREDNOSTI TECHNICAL ADVANTAGES

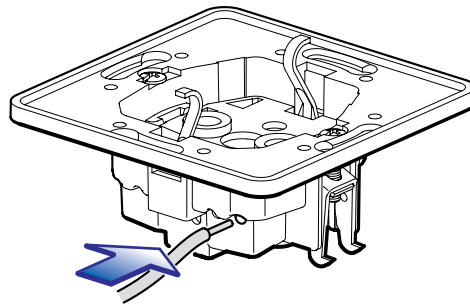
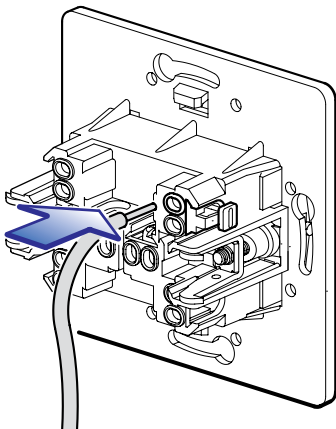


BEZVIJČANA MONTAŽA SCREWLESS INSTALLATION



Ugradnja pomoću stegača je brza i jednostavna zahvaljujući rešenju koje omogućava pritezanje stegačem sa vrlo malo okretaja izvijača i bez potrebe jačeg pritezanja vijka.

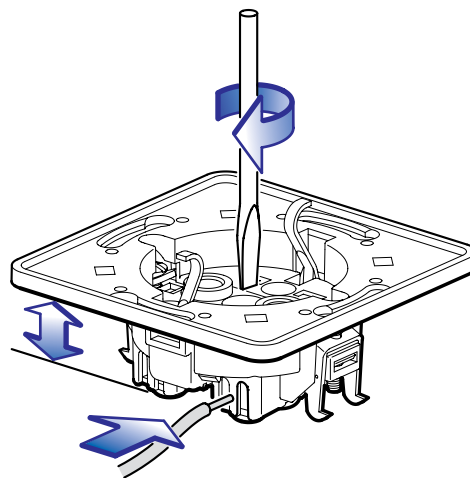
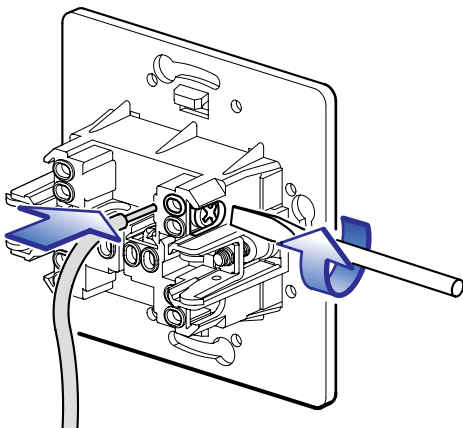
The installation by clamps is quick and simple thanks to the solution that provides tightening by clamps with a few screwdriver turnings only and without any necessity for stronger screw tightening.



Bezvičajni kontakti omogućavaju pouzdanu i brzu montažu do dva provodnika preseka $2,5\text{mm}^2$, bez upotrebe alata za stezanje.

Screwless contacts are allowing safe and fast installation up to two conductors with diameter $2,5\text{mm}^2$, without screwdriver.

VIJČANA MONTAŽA INSTALLATION WITH SCREWS



Priključnica je izrađena tako da zauzima veoma malo prostora u montažnoj kutiji čime se montaža pojednostavljuje zbog većeg prostora za smeštaj provodnika.

Socket outlet is made to take a very little space in installation box. Installation is simple because of enough space for conductors.

Pritezanje provodnika obezbedeno je pouzdanom i sigurnom vijčanom vezom za provodnike preseka do 4mm^2 . Priključivanje provodnika je veoma brzo jer je obezbedeno njegovo postavljanje bez mogućnosti isklizavanja tokom pritezanja.

The tightening of conductors is provided by the reliable and safe screw joint for the conductors section to 4mm^2 . The connecting of conductors is very quick as their setting up is secured without any possibility of slipping out during tightening.

**BELI PROGRAM SET
WHITE PROGRAM SET**

U ponudi programa EON izdvajamo setove proizvoda u beloj boji, dimenzija 80 x 80 mm (mehanizam + dekorativna maska).

Jednostavnost forme i sjajni efekat bele boje čine ovaj set pogodnim za sve prostore.

EON program in white color, dimensions 80 x 80 mm, is produced as a set (product without decorative frame + decorative frame).

Simplicity of shape and glossy effect of white color makes this set suitable for all spaces.

SKLOPKE SWITCHES

- Usaglašeno sa IEC 60669-1
- Ugradnja u zid u montažnu kutiju Ø60 pomoću stegača ili vijaka
- Complied with IEC 60669-1
- Wall mounted into the installation box Ø60 by clamps or screws



E605.00

Sklopka jednopolna
10AX/250V~

*Single-pole switch
10AX/250V~*

E60544.00

IP44 stepen zaštite
IP44 protection level



E608.00

Sklopka ukrсна
10AX/250V~

*Intermediate switch
10AX/250V~*

E60844.00

IP44 stepen zaštite
IP44 protection level



E6052.00

Sklopka dvopolna
10AX/250V~

*Double-pole switch
10AX/250V~*

E605244.00

IP44 stepen zaštite
IP44 protection level



E609.00

Taster sklopka za svetlo
bez indikacije 10A/250V~

*Light push-button switch
without indication 10A/250V~*

E60944.00

IP44 stepen zaštite
IP44 protection level



E606.00

Sklopka serijska
10AX/250V~

*Serial switch
10AX/250V~*

E60644.00

IP44 stepen zaštite
IP44 protection level



E6091.00

Taster sklopka za svetlo
sa indikacijom 10A/250V~

*Light push-button switch
with indication 10A/250V~*

E609144.00

IP44 stepen zaštite
IP44 protection level

- Indikacija svetli kada je sklopka isključena
- Indication is on when the switch is off



E607.00

Sklopka naizmjenična
10AX/250V~

*Two-way switch
10AX/250V~*

E60744.00

IP44 stepen zaštite
IP44 protection level



E610.00

Taster sklopka za zvono
bez indikacije 10A/250V~

*Bell push-button switch
without indication 10A/250V~*

E61044.00

IP44 stepen zaštite
IP44 protection level



E6072.00

Sklopka naizmjenična
dvostruka 10AX/250V~

*Two-way double switch
10AX/250V~*

E607244.00

IP44 stepen zaštite
IP44 protection level



E6101.00

Taster sklopka za zvono
sa indikacijom 10A/250V~

*Bell push-button switch
with indication 10A/250V~*

E610144.00

IP44 stepen zaštite
IP44 protection level

- Indikacija svetli kada je sklopka isključena
- Indication is on when the switch is off

**E6075.00**

Taster sklopka za roletne 10A/250V~

Rolling shutter push-button switch 10A/250V~

E607544.00

IP44 stepen zaštite
IP44 protection level

- Upravljanje kretanjem elektromotora za roletne u dva smera
- *Control of shutters electric motor movement in two directions*

**E6095.00**

Taster sklopka kartična EON 10A/250V~

Push-button card switch EON 10A/250V~

**E6090.00**

Taster sklopka 10A/250V~

Push-button switch 10A/250V~

E609044.00

IP44 stepen zaštite
IP44 protection level

**E6092.00**

Taster sklopka serijska 10A/250V~

Serial push-button switch 10A/250V~

E609244.00

IP44 stepen zaštite
IP44 protection level

**E625.00**

Sklopka jedнопolna sa indikacijom 10AX/250V~

Single-pole switch with indication 10AX/250V~

E62544.00

IP44 stepen zaštite
IP44 protection level

- Indikacija svetli kada je sklopka isključena
- *Indication is on when the switch is off*

**E619.00**

Sklopka jedнопolna sa indikacijom 16AX/250V~

Single-pole switch with indication 16AX/250V~

E61944.00

IP44 stepen zaštite
IP44 protection level

- Indikacija svetli kada je sklopka isključena
- *Indication is on when the switch is off*

**E626.00**

Sklopka serijska sa indikacijom 10AX/250V~

Serial switch with indication 10AX/250V~

E62644.00

IP44 stepen zaštite
IP44 protection level

- Indikacija svetli kada je sklopka isključena
- *Indication is on when the switch is off*

**E6191.00**

Sklopka jedнопolna indikatorska 16AX/250V~

Single-pole switch with indicator 16AX/250V~

E619144.00

IP44 stepen zaštite
IP44 protection level

- Indikacija svetli kada je sklopka uključena
- *Indication is on when the switch is on*

**E627.00**

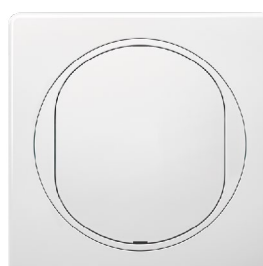
Sklopka naizmenična sa indikacijom 10AX/250V~

Two-way switch with indication 10AX/250V~

E62744.00

IP44 stepen zaštite
IP44 protection level

- Indikacija svetli kada je strujno kolo otvoreno
- *Indication is on when the circuit is open*

**E6808.00**

Slepi poklopac maske EON, complete with frame

**E628.00**

Sklopka ukrсна sa indikacijom 10AX/250V~

Intermediate switch with indication 10AX/250V~

E62844.00

IP44 stepen zaštite
IP44 protection level

- Indikacija svetli kada je strujno kolo otvoreno
- *Indication is on when the circuit is open*

REGULATORI JAČINE SVETLOSTI DIMMERS



E617.00

Regulator jačine svetlosti sa naizmjeničnom sklopkom 40-400VA, 230V~/50Hz

Dimmer with two-way switch 40-400VA, 230V~/50Hz

- Za sijalice sa užarenim vlaknom i halogene sijalice sa standardnim transformatorom
- Usaglašeno sa IEC 60669-2-1
- Ugradnja u zid u montažnu kutiju Ø60 pomoću stegača ili vijaka

- *For incandescent filament lamps and halogen lamps with standard transformer*
- *Complied with IEC 60669-2-1*
- *Wall mounted into the installation box Ø60 by clamps or screws*



E6173.00

Regulator jačine svetlosti sa rotacionom jednopolnom sklopkom 40-400VA, 230V~/50Hz

Dimmer with rotary single-pole switch 40-400VA, 230V~/50Hz

- Za sijalice sa užarenim vlaknom i halogene sijalice sa standardnim transformatorom
- Usaglašeno sa IEC 60669-2-1
- Ugradnja u zid u montažnu kutiju Ø60 pomoću stegača ili vijaka

- *For incandescent filament lamps and halogen lamps with standard transformer*
- *Complied with IEC 60669-2-1*
- *Wall mounted into the installation box Ø60 by clamps or screws*



E6175.00

Regulator jačine svetlosti za LED, 100W

Dimmer for LED, 100W

- Univerzalni elektronski regulator za sve vrste sijalica
- Osnovna namena za CFL i LED dimabilne sijalice 0-100W
- Usaglašeno sa IEC 60669-2-1

- *Universal dimmer for all types of bulbs*
- *The main purpose for dimmable CFL and LED bulbs 0-100W*
- *Complied with IEC 60669-2-1*

IZLAZ KABLA / CABLE OUTLET

- Usaglašeno sa IEC 60670-1 i IEC 60670-22
- Ugradnja u zid u montažnu kutiju Ø60 pomoću stegača ili vijaka

- *Complied with IEC 60670-1 and IEC 60670-22*
- *Wall mounted into the installation box Ø60 by clamps or screws*



E641.00

Izlaz kabla EON
Cable outlet EON,
complete with frame



E642.00

Izlaz kabla sa stezaljkama
EON 3x2.5mm² 450V
Cable outlet with terminals
EON 3x2.5mm² 450V,
complete with frame

- Usaglašeno sa IEC 60884-1
- Ugradnja u zid u montažnu kutiju Ø60 pomoću stegača ili vijaka
- Complied with IEC 60884-1
- Wall mounted into the installation box Ø60 by clamps or screws

PRIKLJUČNICE SOCKET OUTLETS



E600.00

Priključnica dvopolna 16A/250V~
sa porcelanskim jezgrom
*Double-pole socket outlet 16A/250V~
with porcelain insert*



E603.00

Priključnica dvopolna
sa poklopcem 16A/250V~
sa porcelanskim jezgrom
*Double-pole socket outlet
with cover 16A/250V~
with porcelain insert*



E601.00

Priključnica dvopolna 16A/250V~
sa porcelanskim jezgrom
i zaštitom kontakta
*Double-pole socket outlet
16A/250V~ with porcelain insert
and touch protection*



E633.00

Priključnica dvopolna
sa poklopcem 16A/250V~
sa polikarbonatskim jezgrom
*Double-pole socket outlet
with cover 16A/250V~ with
polycarbonate insert*



E630.00

Priključnica dvopolna 16A/250V~
sa polikarbonatskim jezgrom
*Double-pole socket outlet 16A/250V~
with polycarbonate insert*



E623.00

Priključnica dvopolna
16A/250V~, **IP44** sa
polikarbonatskim jezgrom
*Double-pole socket outlet
16A/250V~, IP44 with
polycarbonate insert*



E604.00

Priključnica dvopolna
dupla 16A/250V~
sa polikarbonatskim jezgrom
*Double-pole socket
outlet 16A/250V~ dual
with polycarbonate insert*

- Nema mogućnost ugradnje u višestruke maske
- No possibility of mounting into multi-gang masks



E6161.00

USB A punjač 2xUSB
2,1A/5V=

*2xUSB A charger
2,1A/5V=*

- Za punjenje elektronskih uređaja putem standardnog USB porta
- Punjenje dva uređaja istovremeno
- Usaglašeno sa EN 60950-1 i EMC direktivom
- Ugradnja u zid u montažnu kutiju Ø60 pomoću stegača ili vijaka

- *For charging of electronic devices via standard USB port;*
- *Enables charging of two devices simultaneously*
- *Complied with EN 60950-1 and EMC directive*
- *Wall mounted into the installation box Ø60 by clamps or screws*



E6162.00

Priključnica USB/USB
Keystone

*USB/USB socket
Keystone*

- Za konekciju USB uređaja i kablova (nije punjač)
- Podržava USB 2.0 standard
- Ugradnja u zid u montažnu kutiju Ø60 pomoću stegača ili vijaka

- *For connection of USB devices and cables (not charging unit)*
- *Supports USB 2.0 standard*
- *Wall mounted into the installation box Ø60 by clamps or screws*



E6166.00

USB C punjač
3A/5V=

*USB C charger
3A/5V=*

- Za punjenje elektronskih uređaja putem USB C porta
- Usaglašeno sa EN 60950-1 EMC direktivom
- Ugradnja u zid u montažnu kutiju Ø60 pomoću stegača ili vijaka

- *For charging of electronic devices via USB C port;*
- *Complied with EN 60950-1 and EMC directive*
- *Wall mounted into the installation box Ø60 by clamps or screws*



E6163.00

Priključnica HDMI/HDMI
Keystone

*HDMI/HDMI socket
Keystone*

- Za konekciju kablova za prenos signala preko HDMI priključka
- Ugradnja u zid u montažnu kutiju Ø60 pomoću stegača ili vijaka

- *For the transmission of signal through HDMI connector*
- *Wall mounted into the installation box Ø60 by clamps or screws*

- Usaglašeno sa IEC 60603-7
- Ugradnja u zid u montažnu kutiju Ø60 pomoću stegača ili vijaka
- Complied with IEC 60603-7
- Wall mounted into the installation box Ø60 by clamps or screws



E613.00

Priključnica telefonska dvostruka sa Keystone modulima RJ12 6/4 Cat3

Double telephone socket with Keystone modules RJ12 6/4 Cat3



E6131.00

Priključnica telefonska dvostruka sa Keystone modulima RJ12 6/6 Cat3

Double telephone socket with Keystone modules RJ12 6/6 Cat3

- Montaža provodnika bez upotrebe alata
- *Toolless conducting wire installation*



E614.00

Priključnica komunikacijska dvostruka sa Keystone modulima RJ45 Cat5e UTP

Double data socket with Keystone modules RJ45 Cat5e UTP

- Montaža provodnika bez upotrebe alata
- Spajanje prema TIA/EIA-568A ili 568B standardu za raspored parica
- *Toolless conducting wire installation*
- *Wiring according to TIA/EIA-568A or 568B standard for the arrangement of pairs*



E614S.00

Priključnica komunikacijska dvostruka sa Keystone modulima RJ45 Cat5e FTP

Double data socket with Keystone modules RJ45 Cat5e FTP (shielded)

- Montaža provodnika bez upotrebe alata
- Spajanje prema TIA/EIA-568A ili 568B standardu za raspored parica
- *Toolless conducting wire installation*
- *Wiring according to TIA/EIA-568A or 568B standard for the arrangement of pairs*



E615.00

Priključnica komunikacijska dvostruka sa Keystone modulima RJ45 Cat6 UTP

Double data socket with Keystone modules RJ45 Cat6 UTP

- Montaža provodnika bez upotrebe alata
- Spajanje prema TIA/EIA-568A ili 568B standardu za raspored parica
- *Toolless conducting wire installation*
- *Wiring according to TIA/EIA-568A or 568B standard for the arrangement of pairs*



E615S.00

Priključnica komunikacijska dvostruka sa Keystone modulima RJ45 Cat6 FTP

Double data socket with Keystone modules RJ45 Cat6 FTP (shielded)

- Montaža provodnika bez upotrebe alata
- Spajanje prema TIA/EIA-568A ili 568B standardu za raspored parica
- *Toolless conducting wire installation*
- *Wiring according to TIA/EIA-568A or 568B standard for the arrangement of pairs*



E616.00

Priključnica komunikacijska sa Keystone modulom RJ45 Cat6A UTP

Data socket with Keystone module RJ45 Cat6A UTP

- Montaža provodnika bez upotrebe alata
- Spajanje prema TIA/EIA-568A ili 568B standardu za raspored parica
- *Toolless conducting wire installation*
- *Wiring according to TIA/EIA-568A or 568B standard for the arrangement of pairs*



E616S.00

Priključnica komunikacijska sa Keystone modulom RJ45 Cat6A FTP

Data socket with Keystone module RJ45 Cat6A FTP (shielded)

- Montaža provodnika bez upotrebe alata
- Spajanje prema TIA/EIA-568A ili 568B standardu za raspored parica
- *Toolless conducting wire installation*
- *Wiring according to TIA/EIA-568A or 568B standard for the arrangement of pairs*

- Usaglašeno sa IEC 60169-2
- Ugradnja u zid u montažnu kutiju Ø60 pomoću stegača ili vijaka

- Complied with IEC 60169-2
- Wall mounted into the installation box Ø60 by clamps or screws



E612I.00

Priključnica antenska TV završna za individualne sisteme

TV aerial socket for individual systems

- Muški konektor
- Odvodno slabljenje signala <1 dB

- Male connector
- Connection attenuation <1 dB



E612P.00

Priključnica antenska TV/FM prolazna

TV/FM aerial socket transient

- Muški konektor TV, ženski konektor FM
- Prolazno slabljenje 4 dB, odvodno 6 dB, sprega TV/FM >20 dB

- Male connector TV, female connector FM
- Throughpass attenuation 4 dB, connection atten. 6 dB, coupling TV/FM >20 dB



E612Z.00

Priključnica antenska TV/FM završna

TV/FM aerial socket terminal

- Muški konektor TV, ženski konektor FM
- Odvodno slabljenje <2 dB, sprega TV/FM >20 dB

- Male connector TV, female connector FM
- Connection attenuation <2 dB, coupling attenuation TV/FM >20 dB



E612S.00

Priključnica antenska TV/FM/SAT završna

TV/FM/SAT aerial socket terminal

- Muški konektor TV, ženski konektor FM,
- SAT konektor IEC 60169-24 (F tip),
- Odvodno slabljenje <2 dB, sprega TV/FM >20 dB

- Male connector TV, female connector FM,
- SAT connector IEC 60169-24 (F type),
- Connection attenuation <2 dB, coupling attenuation TV/FM >20 dB

MEHANIZMI BEZ MASKE
MECHANISMS WITHOUT COVER FRAME

Proizvodi bez maske proizvode se u tri boje:
beloj, crnoj soft i silver.

Korisnik je u mogućnosti da kombinuje boje
sa dekorativnim maskama po sopstvenoj želji.

*Products without decorative frame are produced
in three colors: white, soft black and silver.*

*The user is able to combine color
with decorative frames as desired.*

- Usaglašeno sa IEC 60669-1
- Ugradnja u zid u montažnu kutiju Ø60 pomoću stegača ili vijaka

- Complied with IEC 60669-1
- Wall mounted into the installation box Ø60 by clamps or screws



E605.x

Sklopka jednopolna
10AX/250V~

*Single-pole switch
10AX/250V~*



E6052.x

Sklopka dvopolna
10AX/250V~

*Double-pole switch
10AX/250V~*



E606.x

Sklopka serijska
10AX/250V~

*Serial switch
10AX/250V~*



E607.x

Sklopka naizmjenična
10AX/250V~

*Two-way switch
10AX/250V~*



E6072.x

Sklopka naizmjenična
dvostruka 10AX/250V~

*Two-way double switch
10AX/250V~*



E608.x

Sklopka ukrсна
10AX/250V~

*Intermediate switch
10AX/250V~*

Bela
White **x = 0**

Crna Soft Touch
Black Soft Touch **x = E1**

Srebrna
Silver **x = S**



E6090.x

Taster sklopka
10A/250V~

*Push-button switch
10A/250V~*



E6092.x

Taster sklopka serijska
10A/250V~

*Serial push-button switch
10A/250V~*



E609.x

Taster sklopka za svetlo
bez indikacije
10A/250V~

*Light push-button switch
without indication
10A/250V~*



E6091.x

Taster sklopka za svetlo
sa indikacijom 10A/250V~

*Light push-button switch
with indication 10A/250V~*

- Indikacija svetli kada je sklopka isključena
- *Indication is on when the switch is off*



E610.x

Taster sklopka za zvono
bez indikacije
10A/250V~

*Bell push-button switch
without indication
10A/250V~*



E6101.x

Taster sklopka za zvono
sa indikacijom 10A/250V~

*Bell push-button switch
with indication 10A/250V~*

- Indikacija svetli kada je sklopka isključena
- *Indication is on when the switch is off*

- Usaglašeno sa IEC 60669-1
- Ugradnja u zid u montažnu kutiju Ø60 pomoću stegača ili vijaka

- Complied with IEC 60669-1
- Wall mounted into the installation box Ø60 by clamps or screws


 Bela
 White **x = 0**



E6075.x

Taster sklopka za roletne
10A/250V~

*Rolling shutter push-button
switch 10A/250V~*

- Upravljanje kretanjem elektromotora za roletne u dva smera
- *Control of shutters' electric motor movement in two directions*



E625.x

Sklopka jednopolna
sa indicijom 10AX/250V~

*Single-pole switch
with indication 10AX/250V~*

- Indikacija svetli kada je sklopka isključena
- *Indication is on when the switch is off*



E626.x

Sklopka serijska
sa indicijom 10AX/250V~

*Serial switch
with indication 10AX/250V~*

- Indikacija svetli kada je sklopka isključena
- *Indication is on when the switch is off*



E627.x

Sklopka naizmenična
sa indicijom 10AX/250V~

*Two-way switch
with indication 10AX/250V~*

- Indikacija svetli kada je strujno kolo otvoreno
- *Indication is on when the circuit is open*



E628.x

Sklopka ukrсна
sa indicijom 10AX/250V~

*Intermediate switch
with indication 10AX/250V~*

- Indikacija svetli kada je strujno kolo otvoreno
- *Indication is on when the circuit is open*



E619.x

Sklopka jednopolna
sa indicijom 16AX/250V~

*Single-pole switch
with indication 16AX/250V~*

- Indikacija svetli kada je strujno kolo otvoreno
- *Indication is on when the circuit is open*

Crna Soft Touch
Black Soft Touch **x = E1**

Srebrna
Silver **x = S**

- Usaglašeno sa IEC 60669-1
- Ugradnja u zid u montažnu kutiju Ø60 pomoću stegača ili vijaka

- Complied with IEC 60669-1
- Wall mounted into the installation box Ø60 by clamps or screws



E6191.x

Sklopka jednopolna
indikatorska 16AX/250V~

*Single-pole switch
with indicator 16AX/250V~*

- Indikacija svetli kada je sklopka uključena
- *Indication is on when the switch is on*



E6095.x

Taster sklopka
kartična
EON 10A/250V~

*Push-button
card switch
EON 10A/250V~*

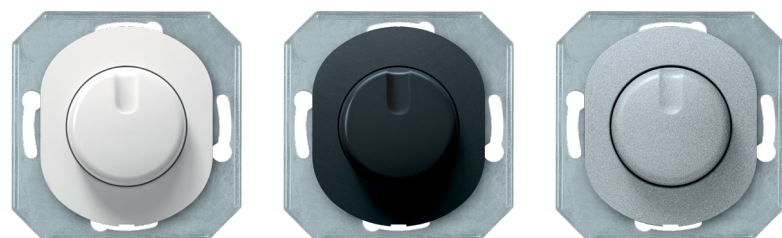


E6808.x

Slepi poklopac
maske EON

*Mask cover EON,
without frame*

- Usaglašeno sa IEC 60669-2-1
- Ugradnja u zid u montažnu kutiju Ø60 pomoću stegača ili vijaka
- Complied with IEC 60669-2-1
- Wall mounted into the installation box Ø60 by clamps or screws



E617.x

Regulator jačine svetlosti sa naizmeničnom sklopkom
40-400VA, 230V~/50Hz

*Dimmer with two-way switch
40-400VA, 230V~/50Hz*

- Za sijalice sa užarenim vlaknom i halogene sijalice sa standardnim transformatorom,
- *For incandescent filament lamps and halogen lamps with standard transformer*



E6173.x

Regulator jačine svetlosti sa rotacionom jednopolnom sklopkom 40-400VA, 230V~/50Hz

*Dimmer with rotary single-pole switch
40-400VA, 230V~/50Hz*

- Za sijalice sa užarenim vlaknom i halogene sijalice sa standardnim transformatorom,
- *For incandescent filament lamps and halogen lamps with standard transformer*



E6175.x

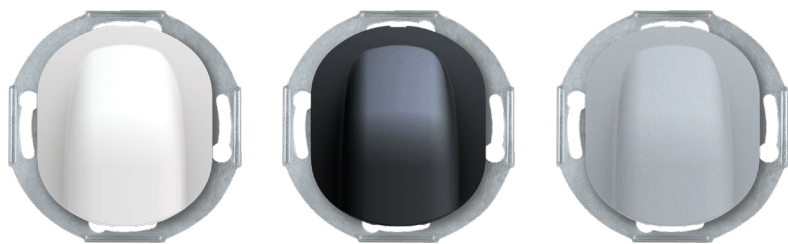
Regulator jačine svetlosti za LED, 100W

Dimmer for LED, 100W

- Univerzalni elektronski regulator za sve vrste sijalica;
- Osnovna namena za CFL i LED dimabilne sijalice 0-100W;
- *Universal dimmer for all types of bulbs;*
- *The main purpose for dimmable CFL and LED bulbs 0-100W;*

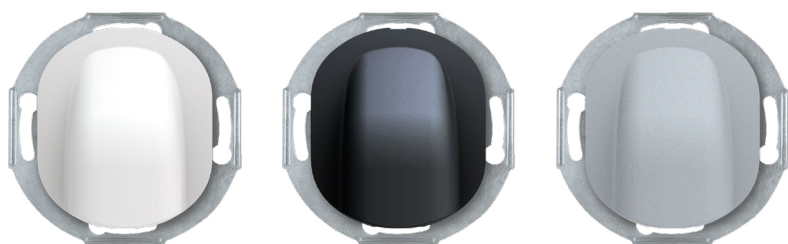
- Usaglašeno sa IEC 60670-1 i IEC 60670-22
- Ugradnja u zid u montažnu kutiju Ø60 pomoću stegača ili vijaka

- *Complied with IEC 60670-1 and IEC 60670-22*
- *Wall mounted into the installation box Ø60 by clamps or screws*



E641.x

Izlaz kablova EON
Cable outlet EON,
without frame



E642.x

Izlaz kablova sa stezaljkama
EON 3x2,5mm² 450V
Cable outlet with terminals
EON 3x2,5mm² 450V,
without frame

USKI TASTER NARROW BUTTON

- Usaglašeno sa IEC 60669-1
- Ugradnja u zid u montažnu kutiju Ø60 pomoću stegača ili vijaka

- *Complied with IEC 60669-1*
- *Wall mounted into the installation box Ø60 by clamps or screws*



E605U.x

Sklopka jednopolna
10AX/250V~
*Single-pole switch
10AX/250V~*



E6052U.x

Sklopka dvopolna
10AX/250V~
*Double-pole switch
10AX/250V~*



E607U.x

Sklopka naizmjenična
10AX/250V~
*Two-way switch
10AX/250V~*

Bela
White **x = 0**

Crna Soft Touch
Black Soft Touch **x = E1**

Srebrna
Silver **x = S**



E608U.x

Sklopka ukrсна
10AX/250V~

*Intermediate switch
10AX/250V~*



E6090U.x

Taster sklopka
10A/250V~

*Push-button switch
10A/250V~*



E609U.x

Taster sklopka za svetlo
bez indikacije
10A/250V~

*Light push-button switch
without indication
10A/250V~*



E609IU.x

Taster sklopka za svetlo
sa indikacijom 10A/250V~

*Light push-button switch
with indication 10A/250V~*

- Indikacija svetli kada je sklopka isključena
- *Indication is on when the switch is off*



E610U.x

Taster sklopka za zvono
bez indikacije
10A/250V~

*Bell push-button switch
without indication
10A/250V~*



E610IU.x

Taster sklopka za zvono
sa indikacijom 10A/250V~

*Bell push-button switch
with indication 10A/250V~*

- Indikacija svetli kada je sklopka isključena
- *Indication is on when the switch is off*

USKI TASTER NARROW BUTTON

- Usaglašeno sa IEC 60669-1
- Ugradnja u zid u montažnu kutiju Ø60 pomoću stegača ili vijaka

- Complied with IEC 60669-1
- Wall mounted into the installation box Ø60 by clamps or screws



E625U.x

Sklopka jednopolna sa indikacijom 10AX/250V~
Single-pole switch with indication 10AX/250V~

- Indikacija svetli kada je sklopka isključena
- *Indication is on when the switch is off*



E627U.x

Sklopka naizmjenična sa indikacijom 10AX/250V~
Two-way switch with indication 10AX/250V~

- Indikacija svetli kada je strujno kolo otvoreno
- *Indication is on when the circuit is open*



E628U.x

Sklopka ukrсна sa indikacijom 10AX/250V~
Intermediate switch with indication 10AX/250V~

- Indikacija svetli kada je strujno kolo otvoreno
- *Indication is on when the circuit is open*



E619U.x

Sklopka jednopolna sa indikacijom 16AX/250V~
Single-pole switch with indication 16AX/250V~


- Indikacija svetli kada je strujno kolo otvoreno
- *Indication is on when the circuit is open*



E6191U.x

Sklopka jednopolna indikatorska 16AX/250V~
Single-pole switch with indicator 16AX/250V~

- Indikacija svetli kada je sklopka uključena
- *Indication is on when the switch is on*

	Bela White	x = 0
	Crna Soft Touch Black Soft Touch	x = E1
	Srebrna Silver	x = S

- Usaglašeno sa IEC 60884-1
- Ugradnja u zid u montažnu kutiju Ø60 pomoću stegača ili vijaka

- Complied with IEC 60884-1
- Wall mounted into the installation box Ø60 by clamps or screws



E600.x

Priključnica dvopolna 16A/250V~ sa porcelanskim jezgrom

Double-pole socket outlet 16A/250V~ with porcelain insert



E601.x

Priključnica dvopolna 16A/250V~ sa porcelanskim jezgrom i zaštitom od kontakta

Double-pole socket outlet 16A/250V~ with porcelain insert and touch protection



E630.x

Priključnica dvopolna 16A/250V~ sa polikarbonatskim jezgrom

Double-pole socket outlet 16A/250V~ with polycarbonate insert



603.x

Priključnica dvopolna sa poklopcem 16A/250V~ sa porcelanskim jezgrom

Double-pole socket outlet with cover 16A/250V~ with porcelain insert



E633.x

Priključnica dvopolna sa poklopcem 16A/250V~ sa polikarbonatskim jezgrom

Double-pole socket outlet with cover 16A/250V~ with polycarbonate insert



E604.x

Priključnica dvopolna dupla 16A/250V~ sa polikarbonatskim jezgrom

Double-pole socket outlet 16A/250V~ dual with polycarbonate insert

- Nema mogućnost ugradnje u višestruke maske
- No possibility of mounting into multi-gang masks

- Usaglašeno sa EN 60950-1 i EMC direktivom
- Ugradnja u zid u montažnu kutiju Ø60 pomoću stegača ili vijaka

- *Complied with EN 60950-1 and EMC directive*
- *Wall mounted into the installation box Ø60 by clamps or screws*



E6161.x

USB A punjač 2xUSB 2,1A/5V=
2xUSB A charger 2,1A/5V=

- Za punjenje elektronskih uređaja putem standardnog USB porta
- Punjenje dva uređaja istovremeno
- *For charging of electronic devices via standard USB port*
- *Enables charging of two devices simultaneously*



E6162.x

Priključnica USB/USB Keystone
USB/USB socket Keystone

- Za konekciju USB uređaja i kablova
- Podržava USB 2.0 standard
- *For connection of USB devices and cables*
- *Supports USB 2.0 standard*



E6166.x

USB C punjač 3A/5V=
USB C charger 3A/5V=

- Za punjenje elektronskih uređaja putem USB C porta
- Usaglašeno sa EN 60950-1 EMC direktivom
- *For charging of electronic devices via USB C port*
- *Complied with EN 60950-1 and EMC directive*



E6163.x

Priključnica HDMI/HDMI Keystone
HDMI/HDMI socket Keystone

- Za konekciju kablova za prenos signala preko HDMI priključka
- *For the transmission of signal through HDMI connector*



E613.x

Priključnica telefonska dvostruka sa Keystone modulima RJ12 6/4 Cat3

Double telephone socket with Keystone modules RJ12 6/4 Cat3



E6131.x

Priključnica telefonska dvostruka sa Keystone modulima RJ12 6/6 Cat3

Double telephone socket with Keystone modules RJ12 6/6 Cat3

- Montaža provodnika bez upotrebe alata
- *Toolless conducting wire installation*

- Usaglašeno sa IEC 60603-7
- Montaža provodnika bez upotrebe alata
- Spajanje prema TIA/EIA-568A ili 568B standardu za raspored parica
- Ugradnja u zid u montažnu kutiju Ø60 pomoću stegača ili vijaka

- Complied with IEC 60603-7
- Toolless conducting wire installation
- Wiring according to TIA/EIA-568A or 568B standard for the arrangement of pairs
- Wall mounted into the installation box Ø60 by clamps or screws



E614.x

Priključnica komunikacijska dvostruka sa Keystone modulima RJ45 Cat5e UTP

Double data socket with Keystone modules RJ45 Cat5e UTP



E614S.x

Priključnica komunikacijska dvostruka sa Keystone modulima RJ45 Cat5e FTP

Double data socket with Keystone modules RJ45 Cat5e FTP (shielded)



E615.x

Priključnica komunikacijska dvostruka sa Keystone modulima RJ45 Cat6 UTP

Double data socket with Keystone modules RJ45 Cat6 UTP



E615S.x

Priključnica komunikacijska dvostruka sa Keystone modulima RJ45 Cat6 FTP

Double data socket with Keystone modules RJ45 Cat6 FTP (shielded)



E616.x

Priključnica komunikacijska sa Keystone modulom RJ45 Cat6A UTP

Data socket with Keystone module RJ45 Cat6A UTP



E616S.x

Priključnica komunikacijska sa Keystone modulom RJ45 Cat6A FTP

Data socket with Keystone module RJ45 Cat6A FTP (shielded)

- Usaglašeno sa IEC 61169-2
- Ugradnja u zid u montažnu kutiju Ø60 pomoću stegača ili vijaka

- Complied with IEC 61169-2
- Wall mounted into the installation box Ø60 by clamps or screws



E612I.x

Priključnica antenska TV završna za individualne sisteme

TV aerial socket for individual systems

- Muški konektor
- Odvodno slabljenje signala <1 dB
- *Male connector*
- *Connection attenuation <1 dB*



E612Z.x

Priključnica antenska TV/FM završna

TV/FM aerial socket terminal

- Muški konektor TV, ženski konektor FM
- Odvodno slabljenje <2 dB, sprega TV/FM >20 dB
- *Male connector TV, female connector FM*
- *Connection attenuation <2 dB, coupling attenuation TV/FM >20 dB*



E612P.x

Priključnica antenska TV/FM prolazna

TV/FM aerial socket transient

- Muški konektor TV, ženski konektor FM
- Prolazno slabljenje 4 dB, odvodno 6 dB, sprega TV/FM >20 dB
- *Male connector TV, female connector FM*
- *Throughpass attenuation 4 dB, connection atten. 6 dB, coupling TV/FM >20 dB*



E612S.x


Priključnica antenska TV/FM/SAT završna

TV/FM/SAT aerial socket terminal

- Muški konektor TV, ženski konektor FM,
- SAT konektor IEC 60169-24 (F tip)
- Odvodno slabljenje <2 dB, sprega TV/FM >20 dB
- *Male connector TV, female connector FM, SAT connector IEC 60169-24 (F type)*
- *Connection attenuation <2 dB, coupling attenuation TV/FM >20 dB*

 Bela
White **x = 0**

 Crna Soft Touch
Black Soft Touch **x = E1**

 Srebrna
Silver **x = S**

eon

DEKORATIVNE MASKE
DECORATIVE FRAMES



 **ALING-CONEL**

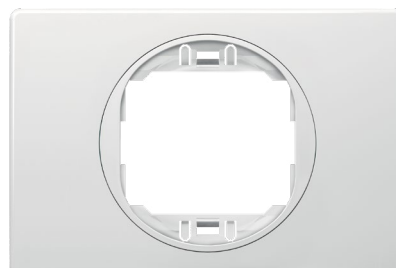
DEKORATIVNE MASKE DECORATIVE FRAMES

JEDNOSTRUKÉ MASKE ONE-GANG FRAMES



E6801.00

Maska jednostruka
80 x 80 mm EON
*One-gang frame
80 x 80 mm EON*

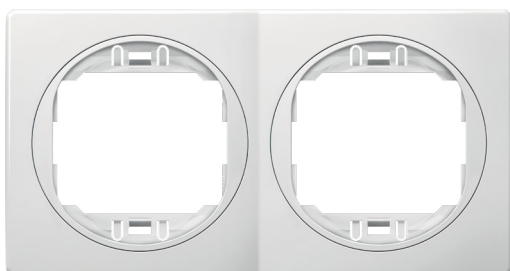


E6803.00

Maska jednostruka
EON 80 x 120 mm
*One-gang frame
EON 80 x 120 mm*

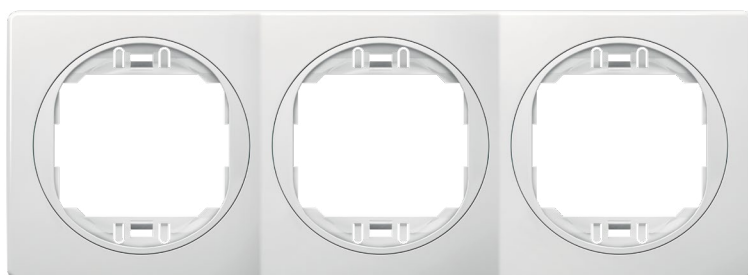
VIŠESTRUKÉ MASKE MULTI-GANG FRAMES

HORIZONTALNE / HORIZONTAL



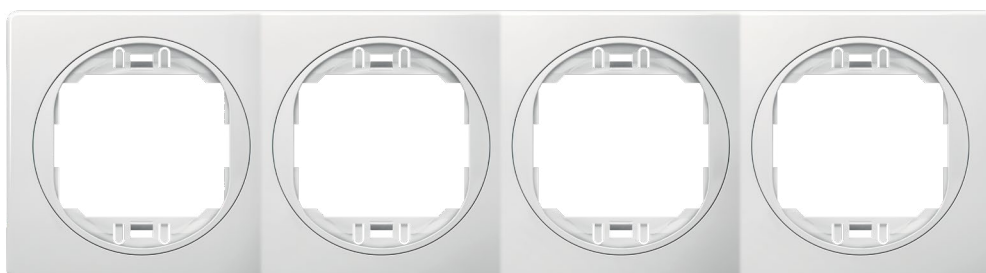
E6701.00

Maska dvostruka
EON horizontalna
*Two-gang frame
EON horizontal*



E6703.00

Maska trostruka
EON horizontalna
*Three-gang frame
EON horizontal*

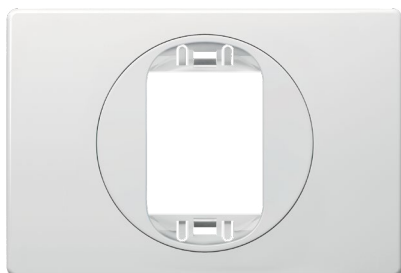


E6704.00

Maska četvorstruka
EON horizontalna
*Four-gang frame
EON horizontal*

- Usaglašeno sa IEC 60669-1 i IEC 60884-1
- Za ugradnju na EON mehanizme ugrađene u zid u nizajuće dozne za višestruke maske (osno rastojanje 71 mm)

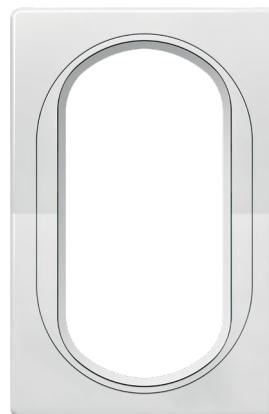
- *Complied with IEC 60669-1 and IEC 60884-1*
- *For mounting onto EON mechanisms wall mounted in a sequence of boxes for multiple masks (axial distance 71 mm)*



E6803U.00

Maska jednostruka
EON 80 x 120 mm
za uski taster

*One-gang frame
EON 80 x 120 mm
for narrow button*

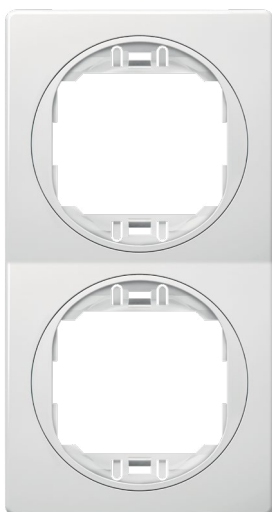


E6805.00

Maska dvostruke
prikjučnice EON

*Double-pole socket
outlet dual frame EON*

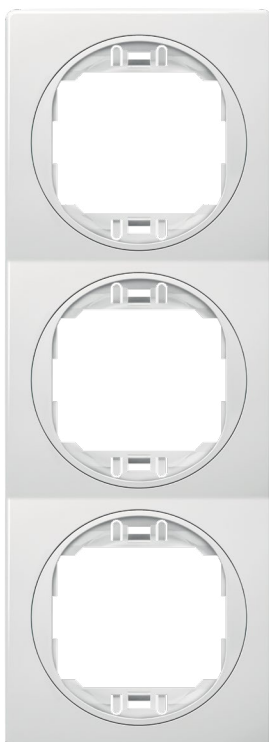
VERTIKALNE / VERTICAL



E6711.00

Maska dvostruka
EON vertikalna

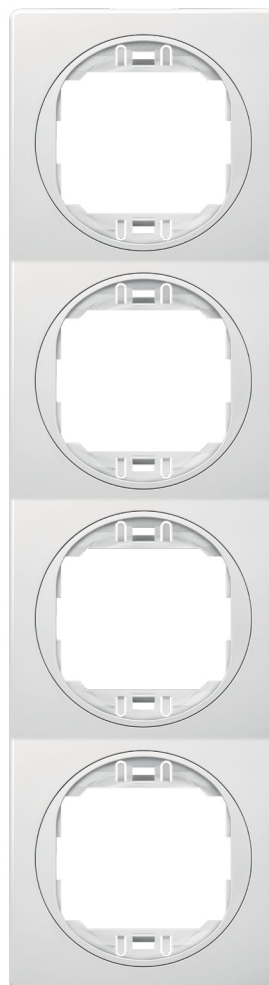
*Two-gang frame
EON vertical*



E6713.00

Maska trostruka
EON vertikalna

*Three-gang frame
EON vertical*



E6714.00

Maska četverostruka
EON vertikalna

*Four-gang frame
EON vertical*

eon

CLASSIC



CLASSIC linija sastoji se iz tri osnovne boje: bela, crna i srebrna.

Boja dekorativnih maski prati boje mehanizama (tastera / bloka).

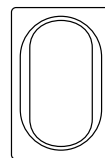
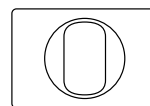
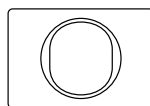
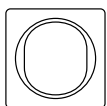
CLASSIC line consists of three basic colors: white, black and silver.

Color of decorative frames is the same as color of mechanisms (button / block).



eon

CLASSIC



Bela maska
Beli nosač
*White frame
White holder*



E6801.00

E6803.00

E6803U.00

E6805.00

Bela maska
Crni nosač
*White frame
Black holder*



E6801.0E

E6803.0E

E6803U.0E

E6805.0E

Bela maska
Srebrni nosač
*White frame
Silver holder*



E6801.0S

E6803.0S

E6803U.0S

E6805.0S

Crna maska
Beli nosač
*Black frame
White holder*



E6801.E0

E6803.E0

E6803U.E0

E6805.E0

Crna maska
Crni nosač
*Black frame
Black holder*



E6801.EE

E6803.EE

E6803U.EE

E6805.EE

Crna maska
Srebrni nosač
*Black frame
Silver holder*



E6801.ES

E6803.ES

E6803U.ES

E6805.ES

Srebrna maska
Beli nosač
*Silver frame
White holder*



E6801.S0

E6803.S0

E6803U.S0

E6805.S0

Srebrna maska
Crni nosač
*Silver frame
Black holder*



E6801.SE

E6803.SE

E6803U.SE

E6805.SE

Srebrna maska
Srebrni nosač
*Silver frame
Silver holder*

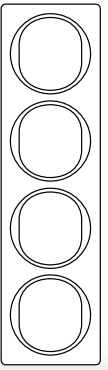
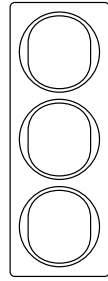
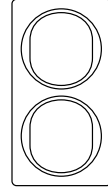
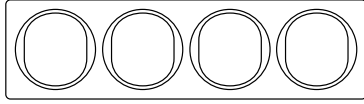
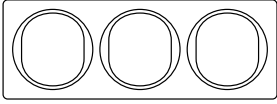
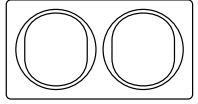


E6801.SS

E6803.SS

E6803U.SS

E6805.SS



E6701.00

E6703.00

E6704.00

E6711.00

E6713.00

E6714.00

E6701.0E

E6703.0E

E6704.0E

E6711.0E

E6713.0E

E6714.0E

E6701.0S

E6703.0S

E6704.0S

E6711.0S

E6713.0S

E6714.0S

E6701.E0

E6703.E0

E6704.E0

E6711.E0

E6713.E0

E6714.E0

E6701.EE

E6703.EE

E6704.EE

E6711.EE

E6713.EE

E6714.EE

E6701.ES

E6703.ES

E6704.ES

E6711.ES

E6713.ES

E6714.ES

E6701.S0

E6703.S0

E6704.S0

E6711.S0

E6713.S0

E6714.S0

E6701.SE

E6703.SE

E6704.SE

E6711.SE

E6713.SE

E6714.SE

E6701.SS

E6703.SS

E6704.SS

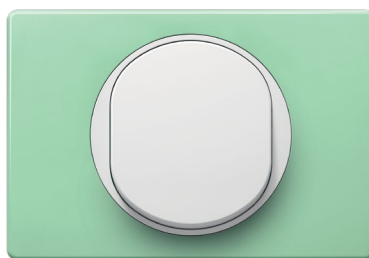
E6711.SS

E6713.SS

E6714.SS

eon

COLOR



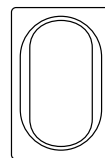
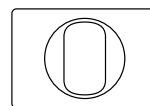
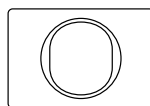
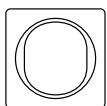
Razigrane boje koje će veselo razbuditi svaki prostor.

Playful colors that will happily wake up every space.



eon

COLOR



Lavanda maska
Beli nosač
*Lavander frame
White holder*



E6801.V0

E6803.V0

E6803U.V0

E6805.V0

Pastel zelena maska
Beli nosač
*Pastel green frame
White holder*



E6801.70

E6803.70

E6803U.70

E6805.70

Krem maska
Crni nosač
*Beige frame
Black holder*



E6801.9E

E6803.9E

E6803U.9E

E6805.9E

Crvena maska
Crni nosač
*Red frame
Black holder*

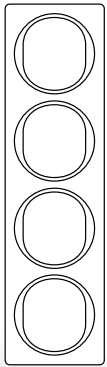
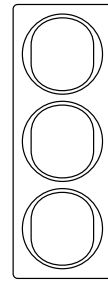
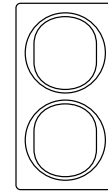
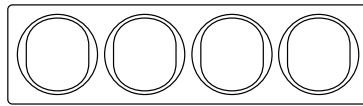
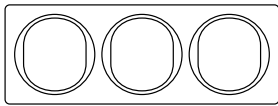
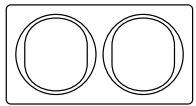


E6801.4E

E6803.4E

E6803U.4E

E6805.4E



E6701.V0

E6703.V0

E6704.V0

E6711.V0

E6713.V0

E6714.V0

E6701.70

E6703.70

E6704.70

E6711.70

E6713.70

E6714.70

E6701.9E

E6703.9E

E6704.9E

E6711.9E

E6713.9E

E6714.9E

E6701.4E

E6703.4E

E6704.4E

E6711.4E

E6713.4E

E6714.4E

eon

METALLIC



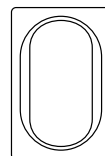
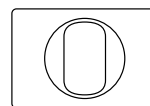
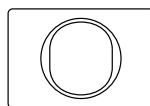
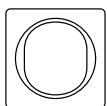
Za prostore sa dozom metalnog odsjaja.

For spaces with a touch of metallic reflection.



eon

METALLIC



Brušeni nikl maska
Crni nosač
*Brushed nickel frame
Black holder*



E6801.G2E

E6803.G2E

E6803U.G2E

E6805.G2E

Antičko srebro maska
Crni nosač
*Antic silver frame
Black holder*



E6801.S1E

E6803.S1E

E6803U.S1E

E6805.S1E

Zlatna maska
Crni nosač
*Gold frame
Black holder*

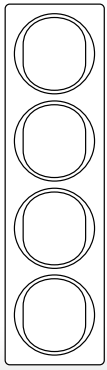
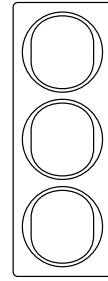
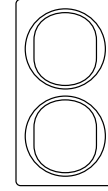
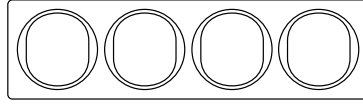
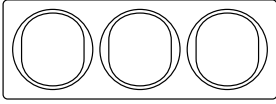
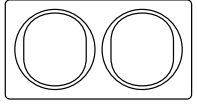


E6801.GE

E6803.GE

E6803U.GE

E6805.GE



E6701.G2E

E6703.G2E

E6704.G2E

E6711.G2E

E6713.G2E

E6714.G2E

E6701.S1E

E6703.S1E

E6704.S1E

E6711.S1E

E6713.S1E

E6714.S1E

E6701.GE

E6703.GE

E6704.GE

E6711.GE

E6713.GE

E6714.GE

eon

SOFT TOUCH

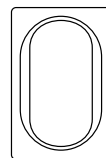
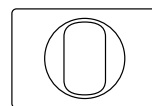
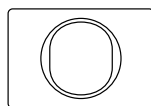
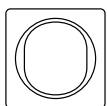


Jednostavan,
nežan na dodir.

*Simple,
gentle touch.*



SOFT TOUCH



Bela Soft Touch maska
Beli nosač
*White Soft Touch frame
White holder*



E6801.K20

E6803.K20

E6803U.K20

E6805.K20

Bela Soft Touch maska
Srebrni nosač
*White Soft Touch frame
Silver holder*



E6801.K2S

E6803.K2S

E6803U.K2S

E6805.K2S

Crna Soft Touch maska
Beli nosač
*Black Soft Touch frame
White holder*



E6801.E10

E6803.E10

E6803U.E10

E6805.E10

Crna Soft Touch maska
Crni nosač
*Black Soft Touch frame
Black holder*



E6801.E1E

E6803.E1E

E6803U.E1E

E6805.E1E

Crna Soft Touch maska
Srebrni nosač
*Black Soft Touch frame
Silver holder*

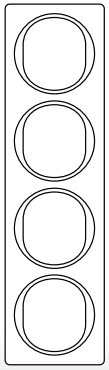
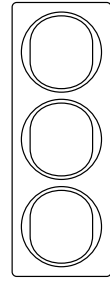
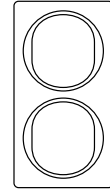
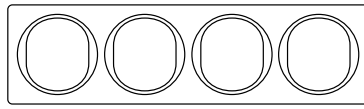
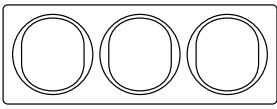
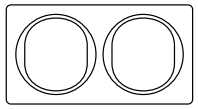


E6801.E1S

E6803.E1S

E6803U.E1S

E6805.E1S



E6701.K20

E6703.K20

E6704.K20

E6711.K20

E6713.K20

E6714.K20

E6701.K2S

E6703.K2S

E6704.K2S

E6711.K2S

E6713.K2S

E6714.K2S

E6701.E10

E6703.E10

E6704.E10

E6711.E10

E6713.E10

E6714.E10

E6701.E1E

E6703.E1E

E6704.E1E

E6711.E1E

E6713.E1E

E6714.E1E

E6701.E1S

E6703.E1S

E6704.E1S

E6711.E1S

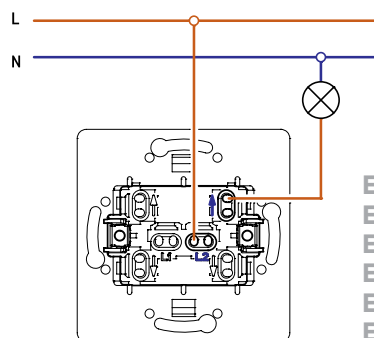
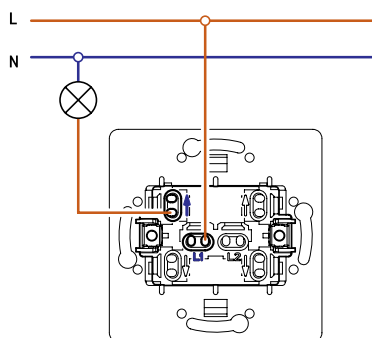
E6713.E1S

E6714.E1S



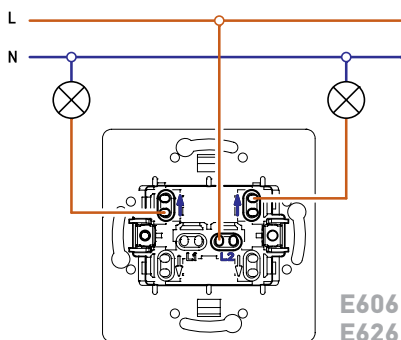
eon

ŠEME VEZIVANJA WIRING DIAGRAMS



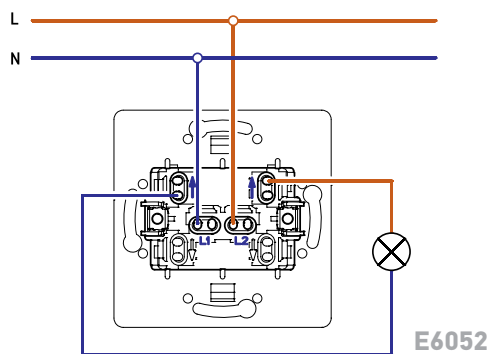
E605
E609I
E610
E610I
E625
E619

Jednopolna sklopka ima dve izvedbe sklapanja (leva i desna) i u skladu s tim se povezuju priključni provodnici.
Single-pole switch is supplied in two wiring executions (left and right) and the conductors are connected accordingly.



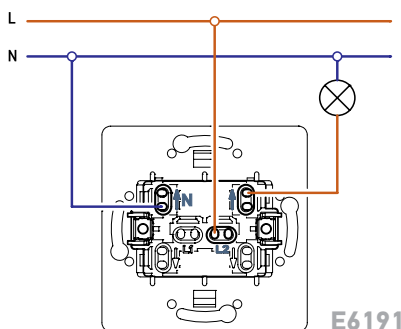
E606
E626

Serijska sklopka
Serial switch



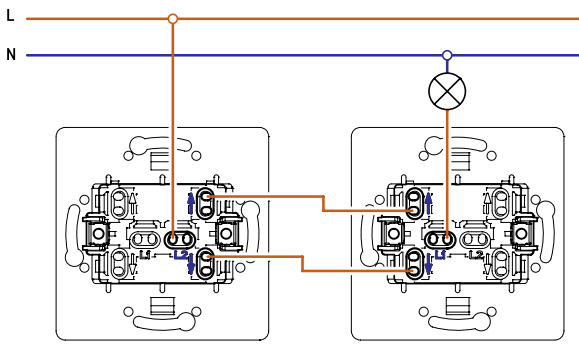
E6052

Dvopolna sklopka
Double-pole switch



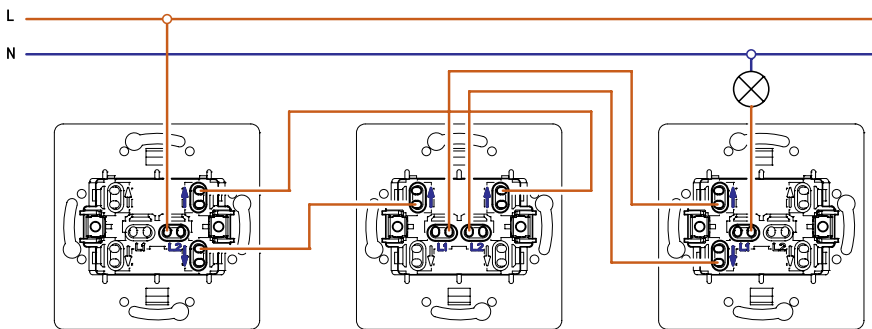
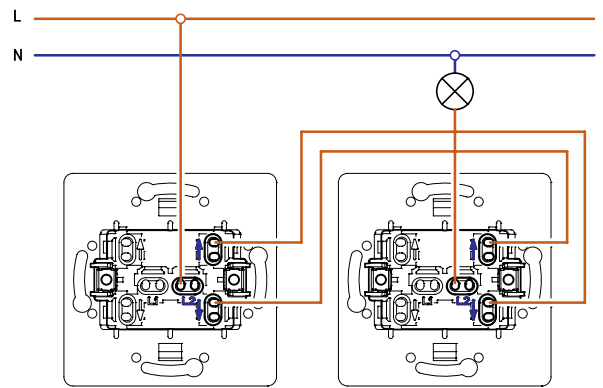
E6191

Jednopolne indikatorske sklopke (indikacija svetli kada je sklopka uključena) za povezivanje zahtevaju multi provodnik
Single-pole indication switches (indication turns on when the switch is on) require neutral conductor to be wired.



E607
E6072
E627

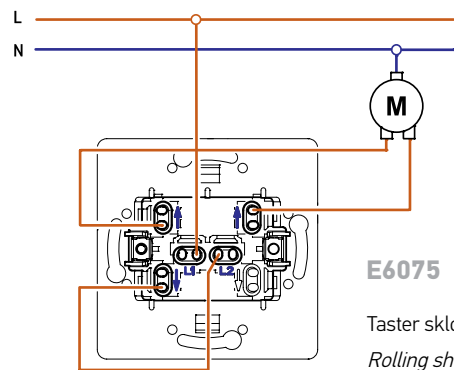
Naizmjenična sklopka, dve izvedbe sklapanja (leva i desna)
Two-way switch, two wiring executions (left and right)



E608
E628

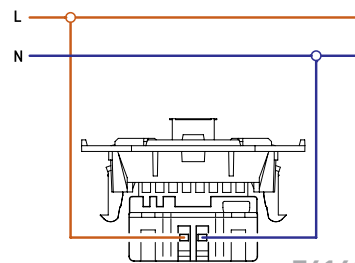
Ukrsna sklopka se povezuje u kombinaciji sa naizmjeničnim sklopkama. Može se povezati neograničen broj ukrasnih sklopki u kombinaciji sa dve naizmjenične.

Intermediate switch is wired in combination with two-way switches. The unlimited number of intermediate switches may be wired in combination with two two-way switches.



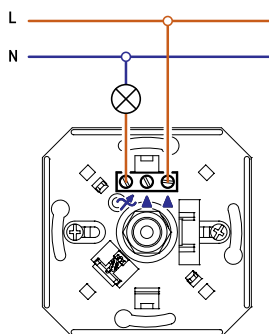
E6075

Taster sklopka za roletne
Rolling shutter push-button switch

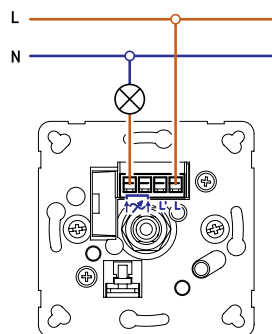


E6161

USB punjač
USB charger



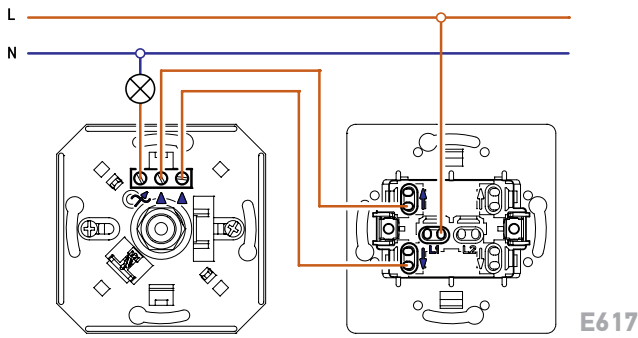
E617
E6173



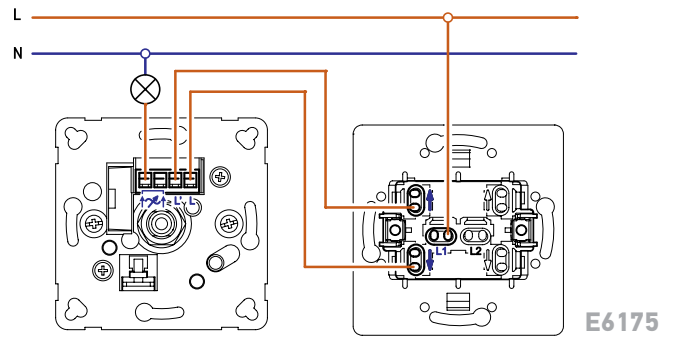
E6175

Povezivanje regulatora jačine svetlosti sa naizmjeničnom sklopkom kao jednopolne sklopke i regulatora sa rotacionom jednopolnom sklopkom.

Wiring of dimmer with two-way switch as a single-pole switch and the dimmer with rotary single-pole switch.



E617

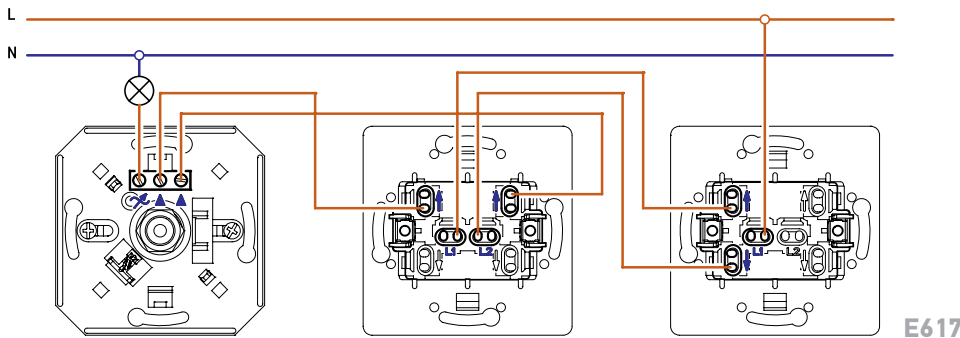


E6175

Regulator jačine svetlosti sa naizmničnom sklopkom može se povezivati i u kombinaciji sa naizmničnom sklopkom za regulaciju sa jednog mesta i uključivanje i isključivanje sa dva mesta. Međusobno povezivanje više regulatora nije moguće.

Dimmer with two-way switch may be also wired in combination with two-way switch for the regulation from one place and switching on and off from two places.

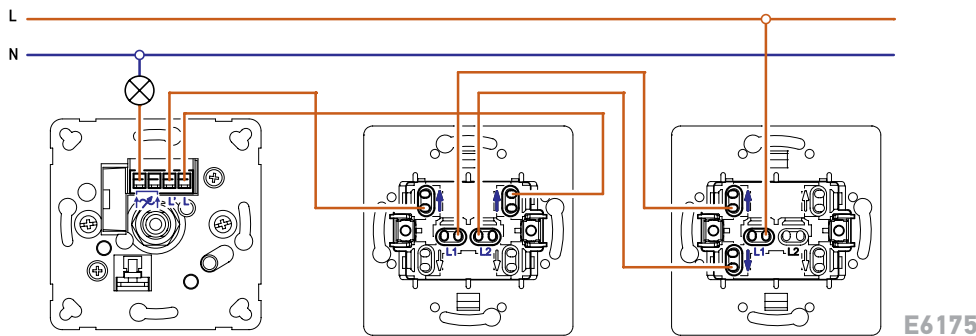
Inter-wiring of more regulators is not possible.



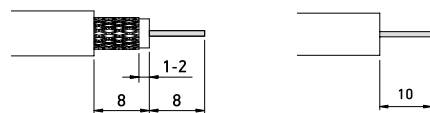
E617

Kombinacijom regulatora sa naizmničnom sklopkom i ukrsne i naizmnične sklopke omogućava se uključivanje i isključivanje sa proizvoljnim brojem mesta.

The combination of dimer with two-way switch and intermediate and two-way switch provides the switching on and off from the desirable number of places.

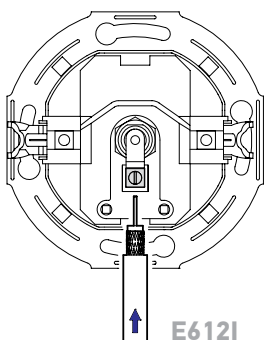


E6175

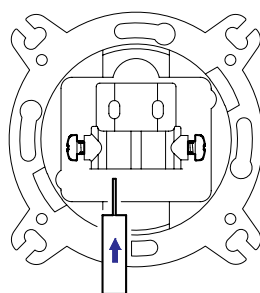


Antenski kabl za priključenje na antenske priključnice potrebno je pripremiti prema prikazanoj šemi da bi se postigao siguran kontakt, jednostavno postavljanje i onemogućio eventualni kratak spoj.

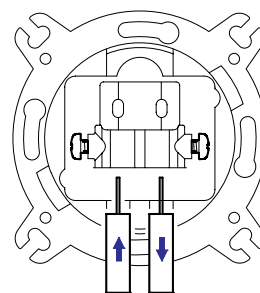
For safe contact, simple installing and short-circuit disabling cable for aerial socket wiring must be prepared according showed scheme.



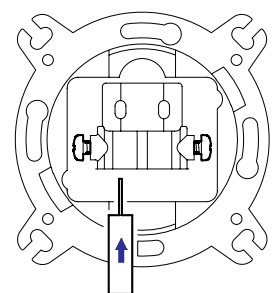
E612I



E612Z

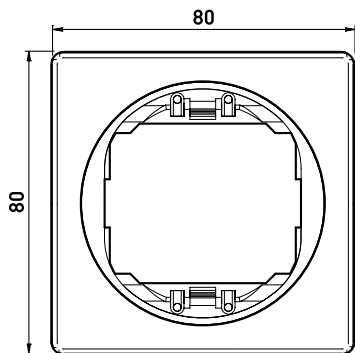


E612P



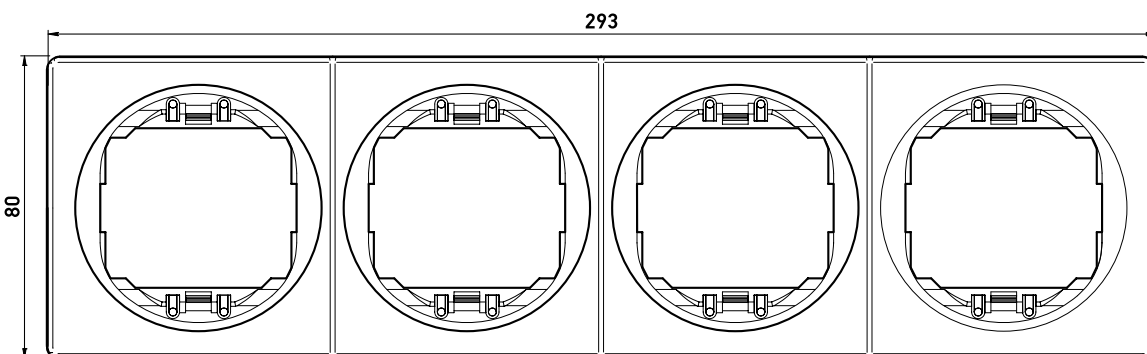
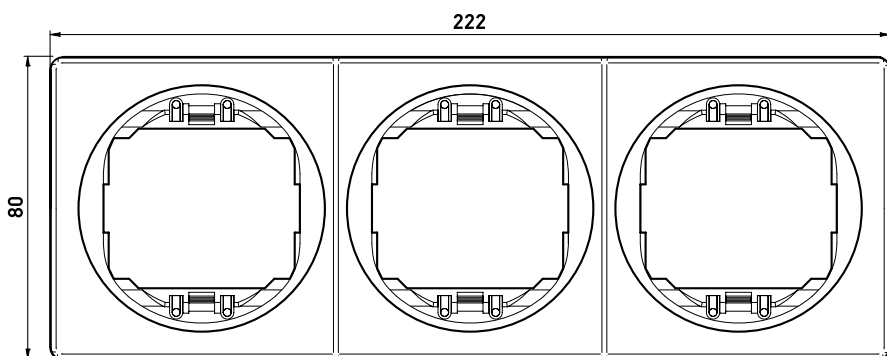
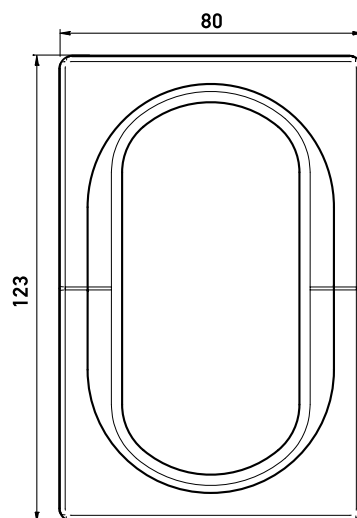
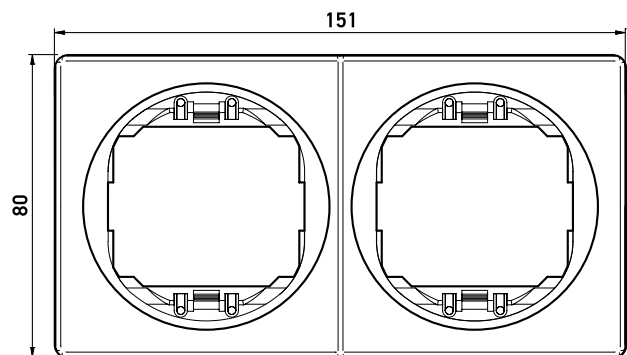
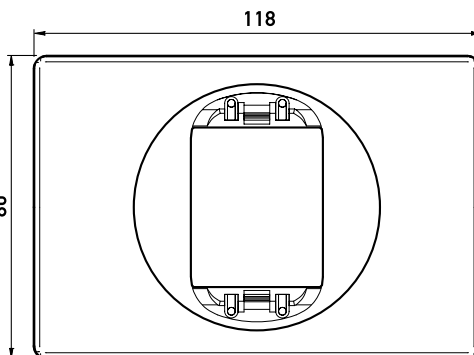
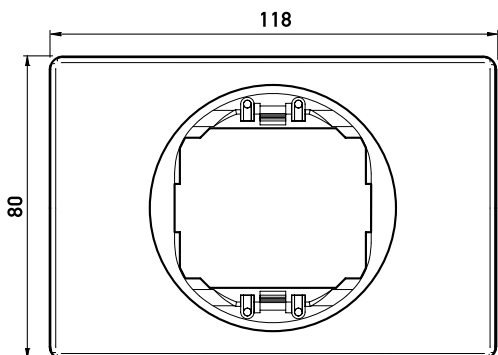
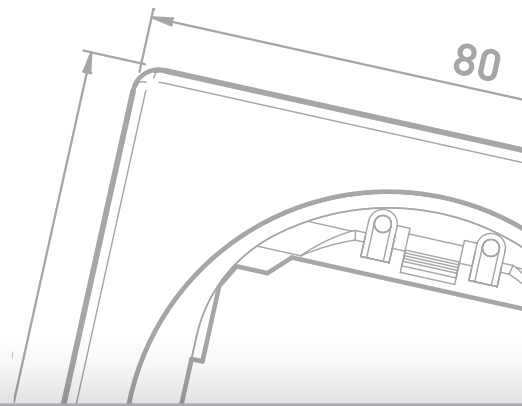
E612S

Pripremljen antenski kabl priključujemo pritezanjem u priključnu stezaljku i stezanjem oklopa kabla priteznom papučicom prema datim šemama. Prepared aerial cable may be installed into terminal and shield tightened by tightening clamp according showed scheme.



eon

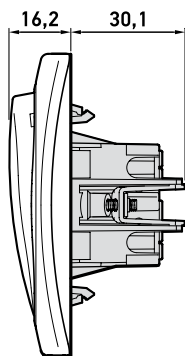
TEHNIČKI CRTEŽI
TECHNICAL DRAWINGS





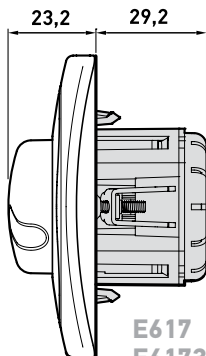
DIMENZIJE ZA UGRADNJU INSTALLATION DIMENSIONS

- Osnova maske 80 x 80 mm
- Cover frame base 80 x 80 mm

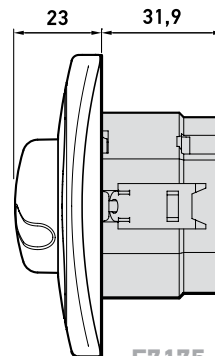


E605
E6052
E606
E607
E6072
E608
E6090
E609
E6091

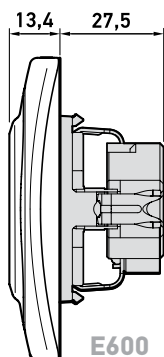
E610
E610I
E625
E626
E627
E6075
E628
E619
E6191



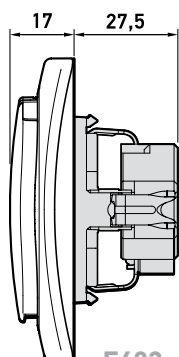
E617
E6173



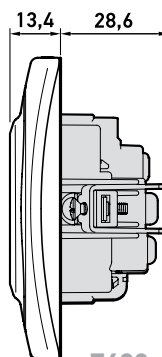
E7175



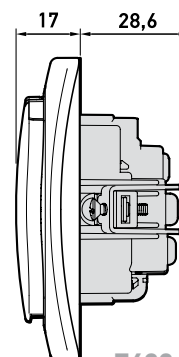
E600
E601



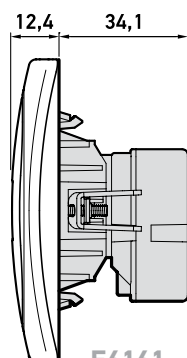
E603



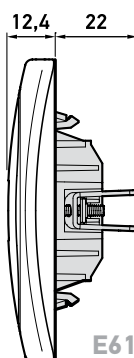
E630



E633

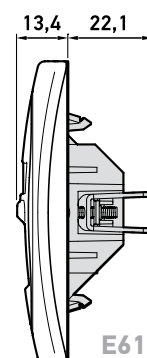


E6161



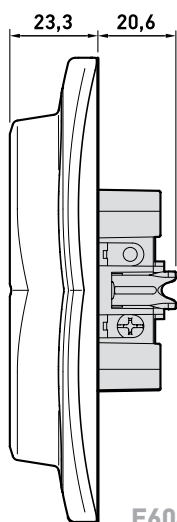
E616
E616S

E6162
E6163



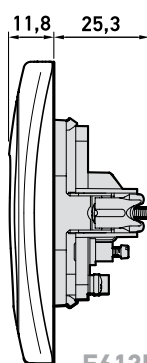
E613
E6131

E614
E614S
E615
E615S

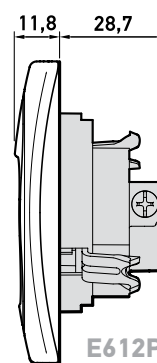


E604

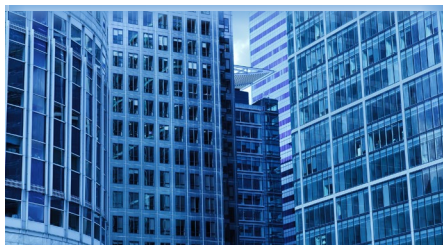
Osnova maske
80 x 123 mm
Cover frame base
80 x 123 mm



E612I



E612P
E612Z
E612S



E04 400 x 1400 mm

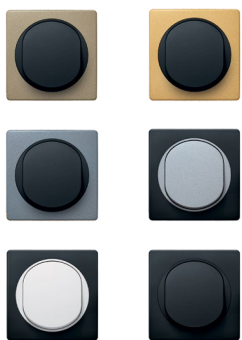
Reklamni pano EON

Display board EON



REKLAMNI MATERIJAL PROMOTIONAL MATERIAL

ALING-CONEL



ALING-CONEL za potrebe veleprodaja, maloprodaja i prodajnih salona nudi reklamne panoe u više dimenzija, sa originalnim proizvodima. Izgled panoa može da varira u zavisnosti od proizvoda koji se na njima prikazuju.

Ideally suitable for wholesales, retails and showrooms ALING-CONEL provides display boards with original devices. The layout of display boards might be changed caused by product changes.



ALING-CONEL



ALING-CONEL



E03 400 x 800 mm

Reklamni pano EON

Display board EON

E02 200 x 750 mm

Reklamni pano EON

Display board EON



E05


Promo kutija EON

Promo box EON

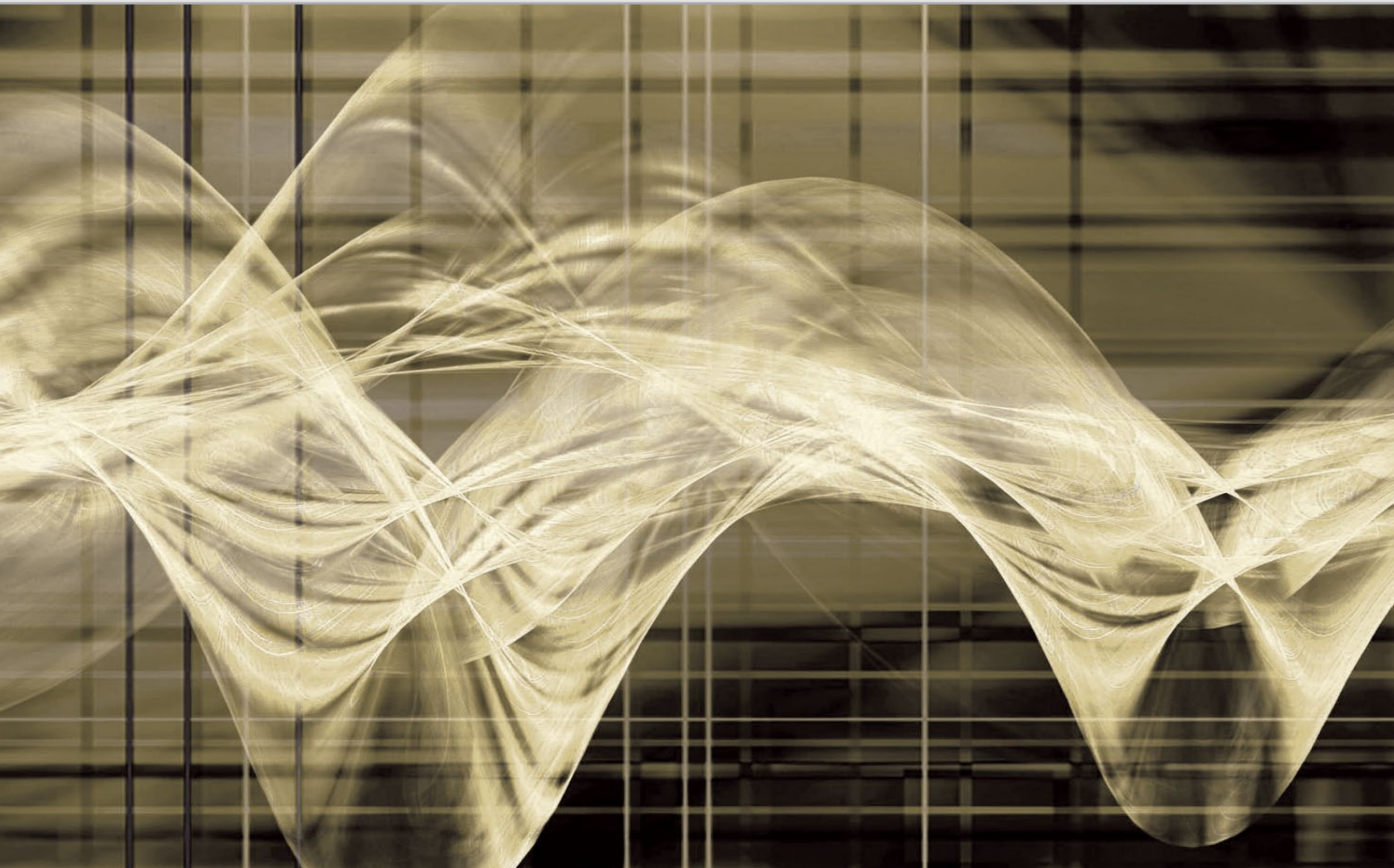
Kutija sa odabranim proizvodima i dekorativnim maskama omogućava prikaz brojnih kombinacija boja i dizajna brenda EON. Kutija je urađena u kvalitetnom plastificiranom kartonu sa dekorativnom štampom.

Promo box with chosen products and decorative frames is designed to show variety of color combinations and design of EON brand. Promo box is made of high quality cardboard with decorative print.

SADRŽAJ KATALOGA *THE CATALOG CONTENT*

- 
- 9 BELI PROGRAM 80X80 SKLOP
WHITE PROGRAM 80X80 SET
 - 10 SKLOPKE
SWITCHES
 - 12 REGULATORI JAČINE SVETLA
DIMMERS
 - 13 PRIKLJUČNICE
SOCKET OUTLETS
 - 14 KOMUNIKACIJE
COMMUNICATIONS
 - 17 MEHANIZMI BEZ MASKE
MECHANISMS WITHOUT COVER FRAME
 - 22 USKI TASTER
NARROW BUTTON
 - 29 DEKORATIVNE MASKE
DECORATIVE FRAMES
 - 32 CLASSIC
 - 36 COLOR
 - 40 METALLIC
 - 44 SOFT TOUCH
 - 48 ŠEME VEZIVANJA
WIRING DIAGRAMS
 - 51 TEHNIČKI CRTEŽI
TECHNICAL DRAWINGS
 - 52 DIMENZIJE ZA UGRADNJU
INSTALATION DIMENSIONS
 - 53 REKLAMNI MATERIJAL
PROMOTIONAL MATERIAL





a: Železnička 10, 21432 Gajdobra, Serbia

t: +381 21 762 674, 762 586

f: +381 21 762 779

e: sales@aling-conel.com

www.aling-conel.com